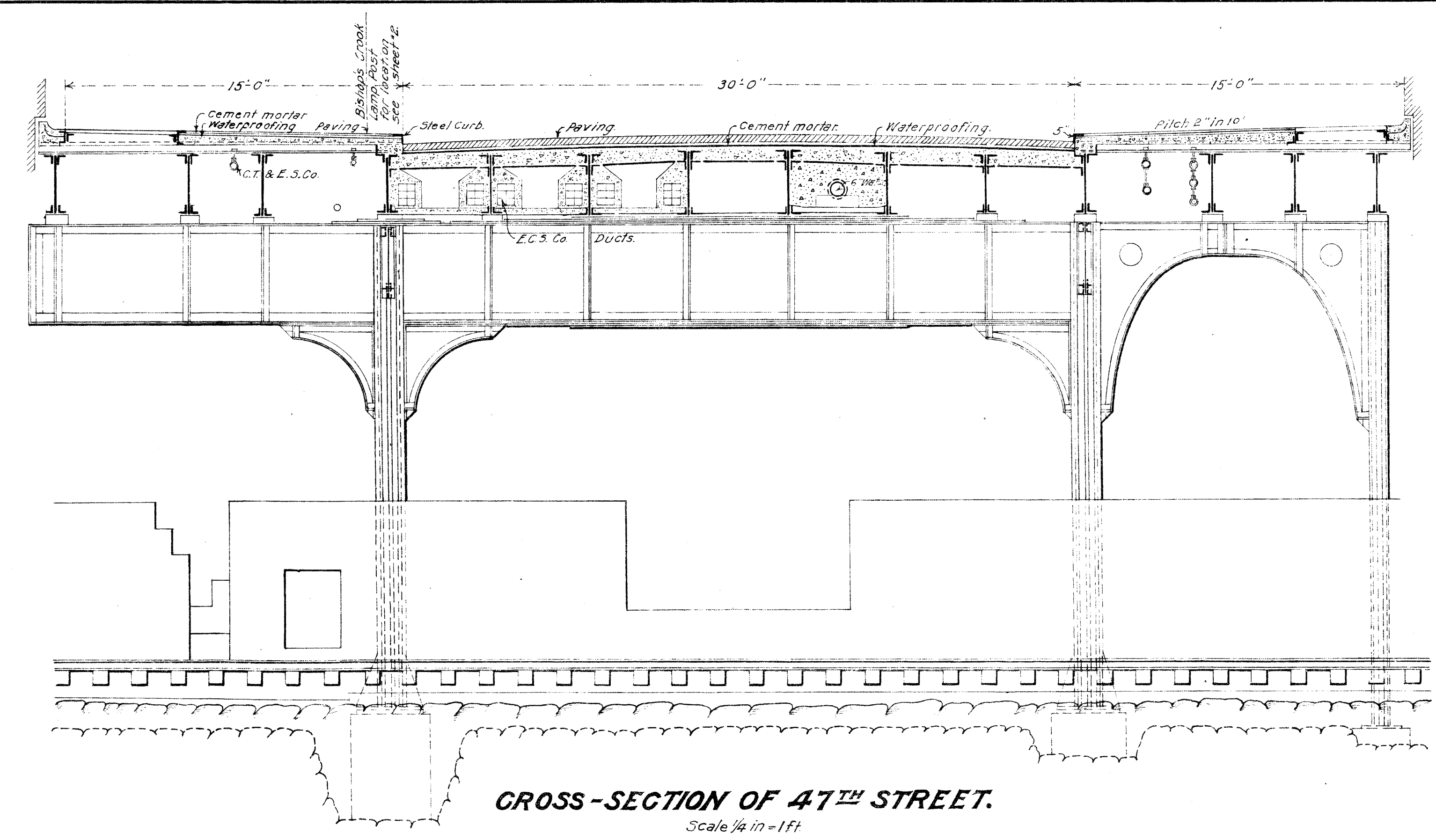
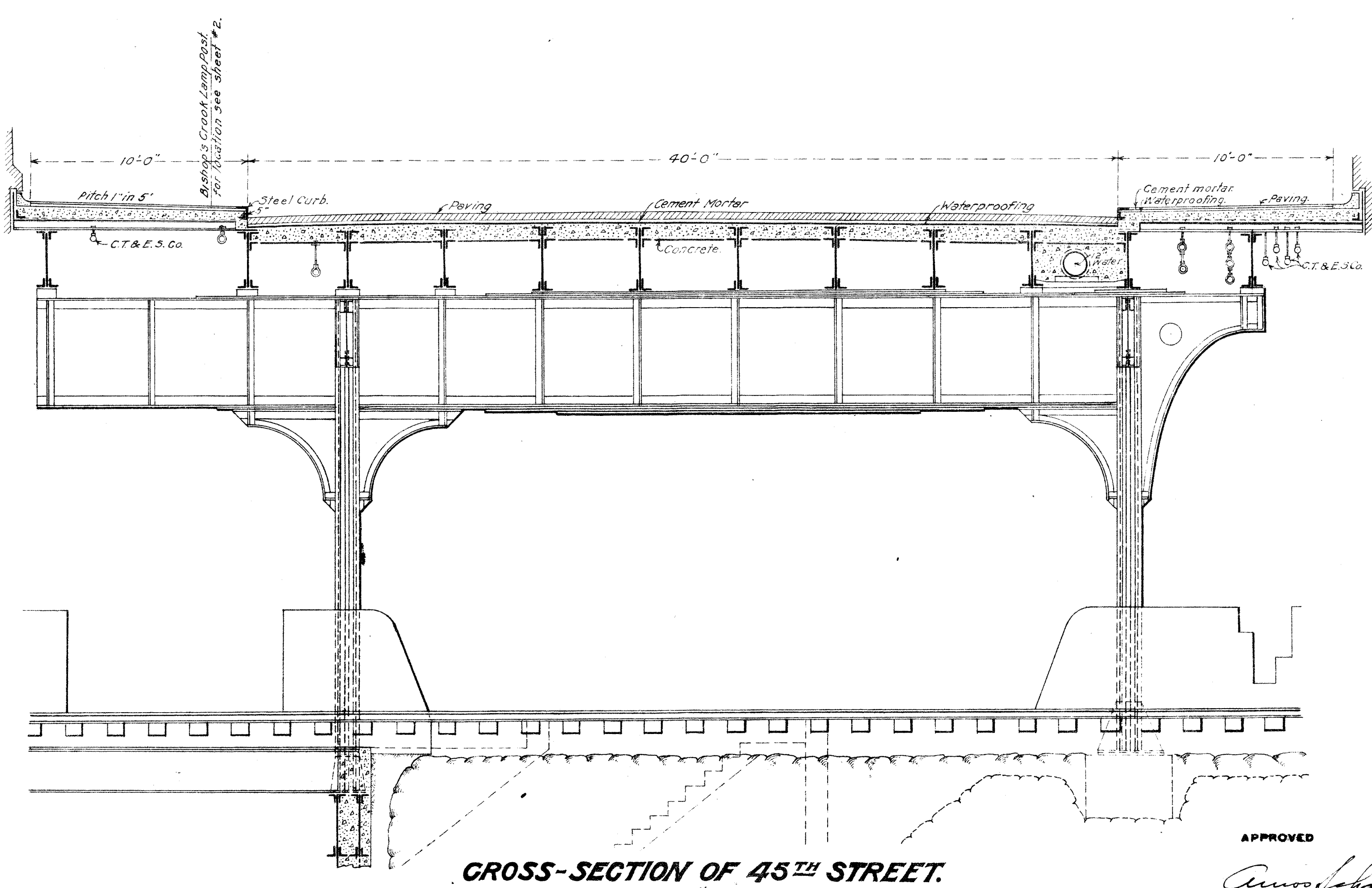


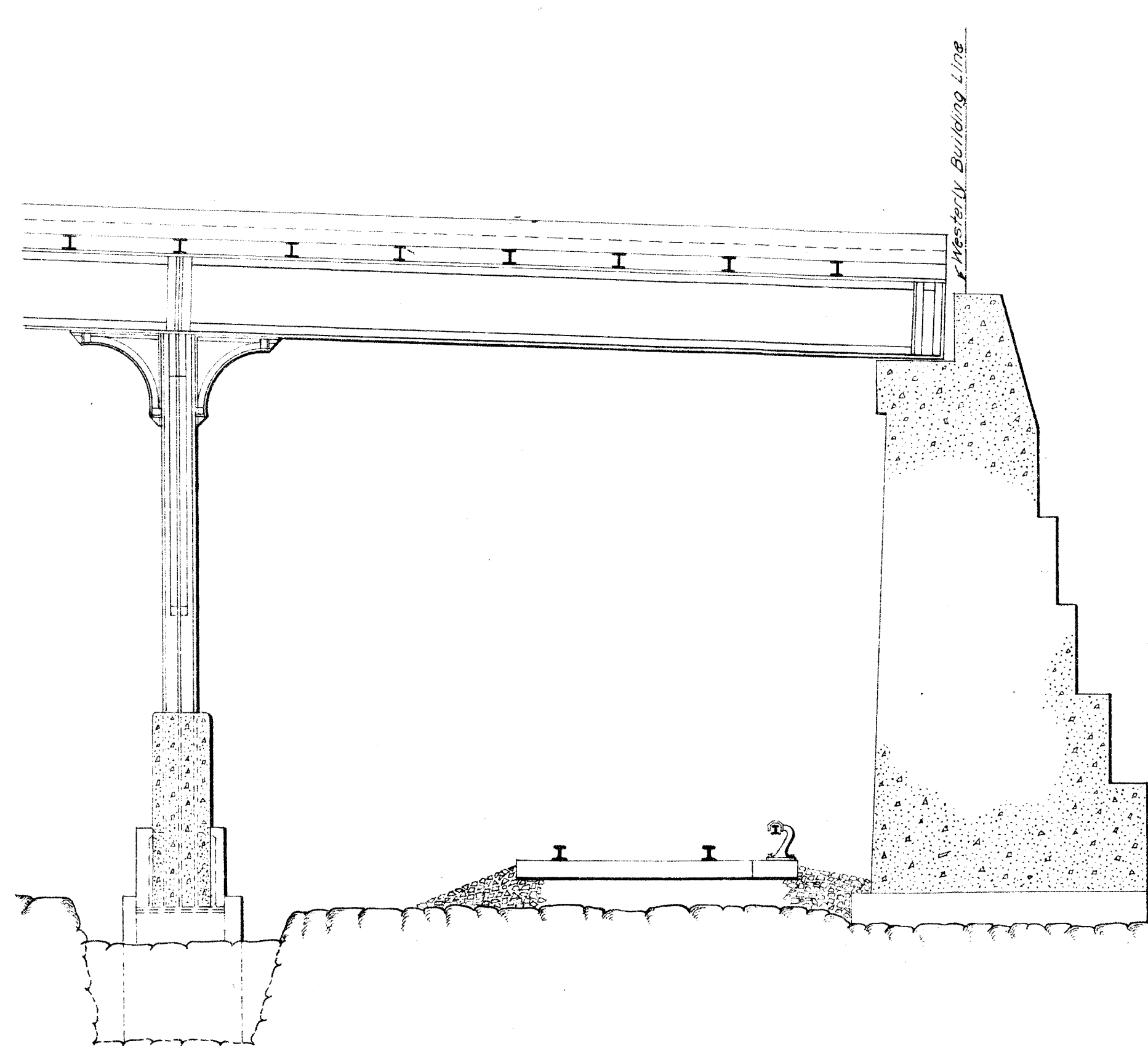
CROSS-SECTION OF 46TH STREET.
Scale 1/4 in = 1 ft.



CROSS-SECTION OF 47TH STREET.
Scale 1/4 in = 1 ft.



CROSS-SECTION OF 45TH STREET.
Scale 1/4 in = 1 ft.



SIDE-ELEVATION.
Scale 1/4 in = 1 ft.

NYC.R.R.CO.
Leased and Operated Lines
GRAND CENTRAL TERMINAL IMPROVEMENTS
NEW YORK CITY.

Cross-Sections and Elevation
Showing further modifications of the cross-sections and elevation of the viaducts or bridges required to carry
FORTY-FIFTH, FORTY-SIXTH AND FORTY-SEVENTH STREETS
over the tracks of the New York and Harlem Railroad Company, and modifying the cross-sections and elevation of such viaducts and bridges which were prepared by The New York Central and Hudson River Railroad Company and submitted in duplicate to the Board of Estimate and Apportionment of the City of New York for its approval on the 26th day of Jan. 1911, and approved by the said Board of Estimate and Apportionment, on the 15th day of June, 1911, pursuant to Chapter 425 of the Laws of 1903, as amended by Chapter 639 of the Laws of 1904, and by Chapter 555 of the Laws of 1910, and also showing alterations, changes and additions other than the alterations, changes and additions authorized by sections 1, 2 and 3 of said Chapter 425 of the Laws of 1903.

PREPARED BY THE NEW YORK CENTRAL RAILROAD COMPANY
and submitted in duplicate to the
BOARD OF ESTIMATE AND APPORTIONMENT OF THE CITY OF NEW YORK
for its approval on the 10th day of April, 1924,
pursuant to Chapter 425 of the Laws of 1903, as amended by Chapter 766 of the Laws of 1923,
THE NEW YORK CENTRAL RAILROAD COMPANY,

By *John F. Hyland* President.
STATE OF NEW YORK,
COUNTY OF NEW YORK, ss.:
We, the undersigned, **JOHN F. HYLAND**, Mayor of the City of New York, and **CHARLES L. CRAIG**, Comptroller of the City of New York, hereby certify that the resolution of which the following is a copy was duly adopted by a majority of the votes of the Board of Estimate and Apportionment of the City of New York at a meeting duly held on the 11th day of April, 1924:
RESOLVED, that the cross-sections and elevation showing further modifications of the cross-sections and elevation of the viaducts or bridges required to carry Forty-fifth, Forty-sixth and Forty-seventh streets over the tracks of the New York and Harlem Railroad Company, and modifying the cross-sections and elevation of such viaducts and bridges which were prepared by The New York Central and Hudson River Railroad Company and submitted in duplicate to the Board of Estimate and Apportionment of the City of New York for its approval on the 26th day of January, 1911, and approved by the said Board of Estimate and Apportionment on the 15th day of June, 1911, pursuant to Chapter 425 of the Laws of 1903, as amended by Chapter 639 of the Laws of 1904, and by Chapter 555 of the Laws of 1910, and also showing alterations, changes and additions other than the alterations, changes and additions authorized by sections 1, 2 and 3 of said Chapter 425 of the Laws of 1903, prepared by The New York Central Railroad Company and submitted in duplicate to the Board of Estimate and Apportionment of the City of New York for its approval on the 10th day of April, 1924, pursuant to Chapter 425 of the Laws of 1903, as amended by Chapter 766 of the Laws of 1923, be, and the same are hereby approved.
Dated Dec. 28, 1924.

John F. Hyland Mayor of the City of New York.
Charles L. Craig Comptroller of the City of New York.

N.Y.C.R.R.Co.
Approved: *W. B. Smith* Designing Engineer.
Approved: *W. B. Smith* S.E.S. Architects.
Approved: *W. B. Smith* Terminal Engineer.

APPROVED
Charles L. Craig
CONSULTING ENGINEER
BOROUGH OF MANHATTAN.
Charles L. Craig
CHIEF ENGINEER, BOARD OF
ESTIMATE AND APPORTIONMENT.

A TRUE COPY OF A RESOLUTION ADOPTED BY THE BOARD OF ESTIMATE AND APPORTIONMENT ON APRIL 11, 1924.
Charles L. Craig
SECRETARY.

Approved: *Charles L. Craig* Chief Engineer.
Charles L. Craig Vice President.